

November 22

Introduction of a School Street at Alexandra Primary School - Western Road

Dear Resident or Business

What is a School Street?

A School Street is a road near a school with a temporary restriction on motorised traffic at school drop-off and pick-up times. The restriction applies to school traffic and through traffic, unless they have an exemption.

School Streets provide a safer environment where children, parents and teachers can confidently walk, cycle and wheel to school. Active travel to school improves health, improves air quality, reduces traffic and parking congestion and reduces road danger around schools.

What is being proposed?

Previously we have undertaken two workshops with Alexandra Primary School pupils and teachers, and we have held engagement events with the wider community. One on Barratt Gardens on the 20 October 2021 and again on 15 June 2022 both at Barratt Gardens and Wood Green Library to get feedback from the community on proposals. The feedback was positive towards introducing a School Street and the interventions below.

The key interventions are as follows and are detailed on the enclosed plan:

- Inclusion of cycle racks near The Decorium (events venue)
- Installation of a soft landscaped area outside Barratt Gardens at the junction of Western Road and Mayes Road
- Improvements to the access roads near Decorium to include better paving for accessibility
- Installation of new informal raised crossing point linking Western Road to Barratt Gardens
- Introduction of School Street signage which will operate between 8:00am- 9:00am and 2:45pm - 3:45pm
- Introduction of advanced warning signs on Coburg Road and Mayes Road to warn drivers of the upcoming School Street (not shown on drawing)
- Introduce 'no waiting at any time' double yellow lines

How will the School Street affect me?

During term time, Monday to Friday and between **8.00am- 9.00am** and **2:45pm- 3:45pm**, it is proposed that motor vehicles (cars, vans, motorcycles etc.) will not be allowed to drive into Western Road unless they have an exemption permit (see below for details). School Streets remain open to people walking and cycling and emergency services will have access at all times.

Pedestrian and Cycle zone signs are proposed at the entrance point to the School Street (there are no physical closures on the public highway), and navigations systems will be updated. Vehicles without an exemption may be issued a Penalty Charge Notice.

Will I be eligible for a School Street exemption?

If the scheme goes ahead the following groups would be eligible for an exemption:

- Residents or businesses who have an address within the School Street (see list of properties below) to a maximum of two per property
- Disabled badge ('Blue Badge') holders who require access to the School Street
- Businesses within the School Street
- Pupils of the school that have a disability that prevents them walking or cycling to school
- Medical practitioners attending someone with an address in the School Street
- School bus/vehicle that is transporting disabled children (applications to be made by school/or Children's Services)

The following properties are proposed to be eligible for a resident or business School Street exemption and shown by the blue outline in the attached plan:

- The Decorium 22 Western Rd, London N22 6UH

Vehicles without an exemption, including friends, tradespeople or delivery drivers are not permitted to enter the School Street during operational times. Please note that you do not need an exemption to drive **out** of a School Street if you were already parked when it came into operation.

How can I have my say?

We are currently seeking your views on the design for the School Street.

The design proposal can be seen within the documentation and there are a number of ways to give feedback and responses must be received by **30 November**. You can:

- complete the paper questionnaire enclosed and return it to us in the freepost envelope
- online at www.haringey.gov.uk/adaptive-wood-green or scan the QR code below



- email your views to us at woodgreenregeneration@haringey.gov.uk. Please remember to put the scheme name in your email header. This is the school name.

What happens next?

If the consultation responses support the introduction of a School Street, we will undertake work to change the parking enforcement arrangements for Western Road to implement the School Street and key improvements. We will send out letters to those properties that can apply for exemptions before the School Street is enforceable separately. We anticipate work could start in January 2023.

More information

For more information on our School Street programme please visit www.haringey.gov.uk/school-streets

Yours faithfully



Head of Area Regeneration - Wood Green
[twitter@haringeycouncil](https://twitter.com/haringeycouncil) | facebook.com/haringeycouncil

Placemaking and housing, Alexandra House, Station Road, N22 7TY, Tel No: 020 8489 1000

www.haringey.gov.uk

SCHOOL STREET(S): YOUR FEEDBACK

A School Street is where a walk and cycle zone is created outside a school during drop-off and pick-up times. Only people walking and cycling and those with vehicle permits are eligible to enter the zone. For full details, visit: www.haringey.gov.uk/school-streets

The information you submit via this form will be managed in accordance with our data protection and privacy policy:
<https://www.haringey.gov.uk/contact/privacy-statement>.

Q1. Please write in the name of the School Street Scheme you are commenting on.

Q2. Are you responding as a resident or business in the local area, or as a teacher/member of staff at the school or as a parent of a pupil? Please tick below.

Resident Business Teacher/School Staff

Parent/ Pupil

Other, please state:

Q3. Please share with us your address? (Details will not be published but we need the information for our travel analysis)

Q4. In general, what do you think about the specific School Street project that you are commenting on? Please tick below.

Strongly support Support No view Object

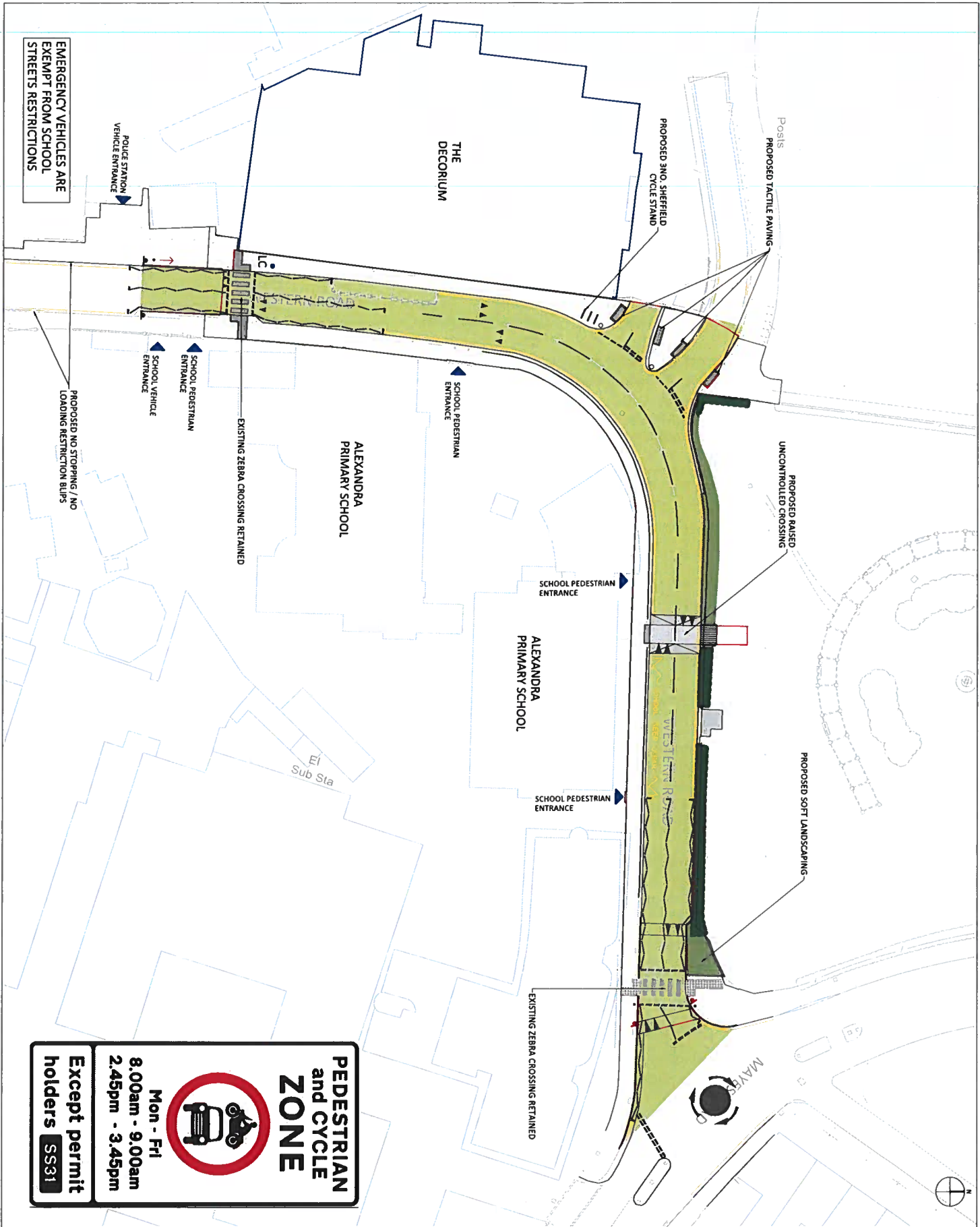
Strongly object

Q5. Please tell us more about why you support, or object, to the scheme?

- This Drawing is to be read in conjunction with all other drawings, specifications, and specifications.
- Do not scale from this drawing to other paper or digital forms. Use written dimensions only. To check drawing has been printed to the intended scale the above has should be shown on A4 or A3 on Screen (mg @ 1:1).
- The drawing has been based on the following external information:
 - 3.1 Wood Common GfM survey - received on 12/07/2022
 - 3.2 Western Island GfM Survey - received on 12/07/2022
 - 3.3 received on 23/06/22
 - 3.4 M&P drawing 1.75-1.53-104 - received on 05/10/22
- London Borough of Hammersmith to confirm School Street restriction time and permit holder exemption

LEGEND

	Proposed School Street
	Zone Sign Rider
	Propositions subject to a school street exemption permit
	Existing Double Yellow Lines
	Proposed enforcement signs to be introduced on junction corners
	Proposed Sign Post and Cycle / F10 Zone Sign Plate



PEDESTRIAN and CYCLE ZONE

Mon - Fri
8.00am - 9.00am
2.45pm - 3.45pm

Except permit holders

SS31

P5 03.11.22 3460 Updated based on Comments Received
 P4 05.10.22 3460 Updated based on Comments Received
 P3 08.09.22 3460 Minor Amendments
 P2 02.09.22 3460 Minor Amendments
 P1 02.09.22 3460 Stage 3
 Rev Date By Eng Amendments

HEVNE STRUCTURAL &
TILLET CIVIL ENGINEERS
STEEL www.his.co.uk

Job Name
 Wood Green Common,
 N22 7SY

Drawing Title
 School Streets
 Alexandra Primary school
 Western Road
 Purpose of Issue Stage 3

Proj No. 2663-HTS-00-00-DR-C-9101
 Scale A4:1 1:150
 Date 03.11.22
 Rev P5

EMERGENCY VEHICLES ARE EXEMPT FROM SCHOOL STREETS RESTRICTIONS